

**The Center for Inclusion &
Multicultural Engagement**

Welcome!

TO THE GATOR NATION.

Celebrating and Empowering
DIVERSE COMMUNITIES

Located on the second level of the Reitz Union
655 Reitz Union
Drive, Suite 2203
Gainesville, FL 32611-4135



Center for Inclusion & Multicultural Engagement Offices

Approach:

The Center for Inclusion and Multicultural Engagement (CIME) works to provide identity-based and culturally responsive resources for education and community.

Values:

Education

Respect

Community

Inclusion



Mission:

Through transformative educational experiences and developmental opportunities, The Center for Inclusion and Multicultural Engagement celebrates and empowers diverse communities and advocates for an inclusive campus for all students across identities.

Learn more about CIME visit
<https://multicultural.ufl.edu/>



Center for Inclusion & Multicultural Engagement Offices



Office of Asian Pacific Islander DESI Student Engagement

- The Office of Asian Pacific Islander Desi Student Engagement is dedicated to creating an inclusive and socially just environment where all forms of diversity are respected and recognized as integral to the UF experience



Office of Black Student Engagement

- Creating, sustaining, and promoting Black scholarship, culture, history, and leadership
- We coordinate an array of educational, cultural, and social programs focused on the Black experience at the University of Florida, the United States, and across the African diaspora.



Office of Hispanic-Latinx Student Engagement

- Advocates on behalf of Hispanic, Latino, Latina, and Latinx populations and offers support to the University of Florida and the Gainesville community
- Provided through various programs, resources and networking opportunities in order to help facilitate cultural awareness and empowerment



Office of Lesbian, Gay, Bisexual, Transgender, Queer+ Student Engagement

- Strives to provide an affirming and Welcoming Space for all LGBTQ+ Identifying Students
- Providing resources to enhance and promote intellectual and personal growth of students to explore and define their complex cultural and intersectional identities.



Inorganic Chemistry

Benny Chen (he/him/his)

Professor at The College of New Jersey

Dr. Chan's research interests include synthesis and characterization of inorganic materials with potential applications in nanotechnology, thermoelectrics, batteries, and catalysis.

He is active in Safe Zone training, which helps allies learn how to create safer spaces for members of the LGBTQ+ academic community. He has also collaborated with the NSF to develop grants to study diversity, inclusion, and retention of STEM students.

In 2019, the National Organization of Gay and Lesbian Scientists and Technical Professionals (now known as Out to Innovate) selected Chan as its LGBTQ+ Educator of the Year.

<https://cen.acs.org/materials/Benny-C-Chan-is-reshaping-the-structures-of-chemistry-curricula-and-thermoelectric-materials/100/i12>

<https://cen.acs.org/careers/diversity/LGBTQ-diversity-Trailblazers-2022/100/i12>



Physical Chemistry

Melissa Gish (she/her/hers)

Staff Scientist at NREL (National Renewable Energy Laboratory)

Her research focuses on using ultrafast spectroscopy to study charge- and energy-transfer processes for renewable energy applications.

Melissa is a co-founder of the Full Spectrum Network, a resource for LGBTQIA+ staff in her workplace.

Since the group's creation in 2019, the Full Spectrum Network has brought NREL to (virtual) Pride events and has built a strong sense of community among LGBTQIA+ staff at the laboratory. She was most recently selected as a member of the American Chemical Society's Trailblazers – a list that celebrates the contributions of LGTBQIA+ chemists in a marginalized population.



<https://cen.acs.org/physical-chemistry/One-on-one-with-Melissa-Gish/100/i12>
<https://www.nrel.gov/research/staff/melissa-gish.html>

Biochemistry

Carolyn Bertozzi (she/her/hers)

Professor at Stanford University

A biochemist and the founder of the field bioorthogonal chemistry, Dr. Bertozzi is studying certain classes of glycoproteins that are distinctly altered in cancer. She has received more than forty awards, published hundreds of scientific articles from her groundbreaking research, holds more than sixty patents and has also co-founded seven biotechnology companies.

She has been fighting for her place in STEM as a queer woman since the 1980s – where both of those parts of her identity had presented various roadblocks. She is quick to champion LGTBQIA+ scientists and encourages their allies to create a supportive environment.

<https://cen.acs.org/biological-chemistry/One-on-one-with-Carolyn-Bertozzi/100/i12>
<https://profiles.stanford.edu/carolyn-bertozzi>



Material Chemistry

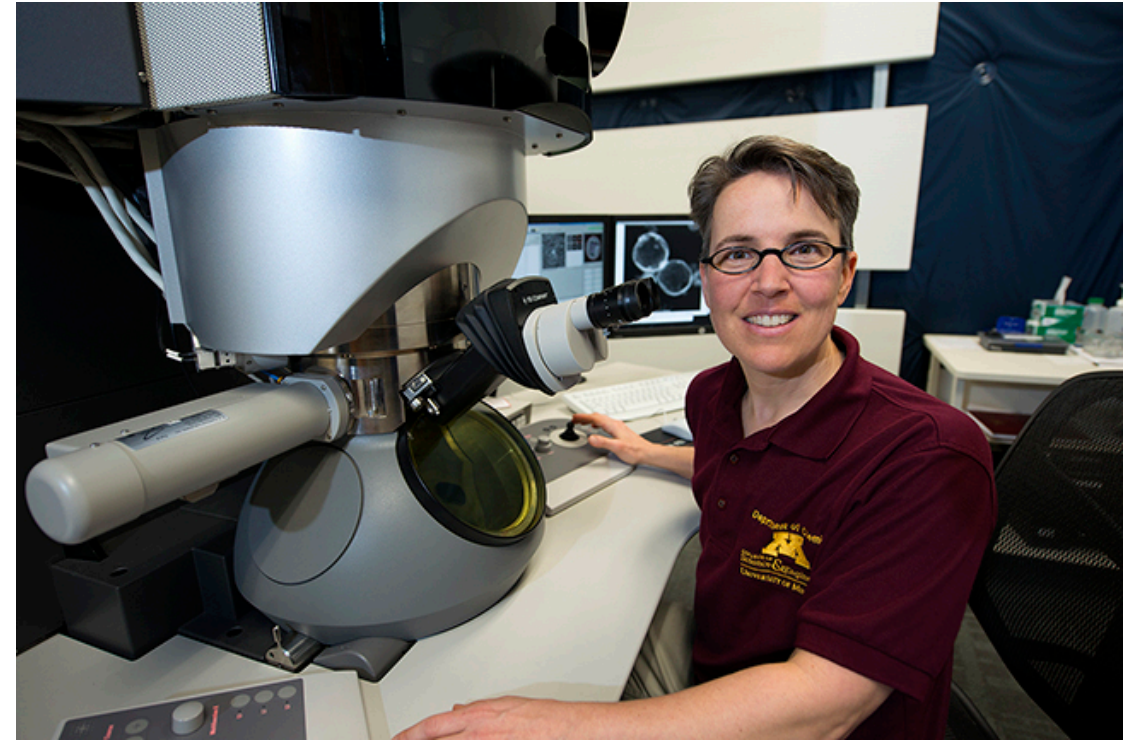
Lee Penn (they/them/theirs)

Professor at the University of Minnesota

Their area of research focuses on fundamental formation and growth mechanisms of nanoparticles, green methods for making nanomaterials, and the roles nanoparticles play in chemical transformations in the environment.

They have received several awards through their university including the Community Excellence Award from the University of Minnesota's Gender and Sexuality Center for Queer and Trans Life in 2017 and the Charlotte Stribel Equity Award which recognizes a faculty or staff member of any gender who goes above and beyond daily responsibilities to promote access for the common good and to build capacity for diverse and equitable campus communities.

<https://500queerscientists.com/lee-penn/>
<https://diversemininds.caltech.edu/speakers/r-lee-penn>



Analytical Chemistry

Barbara Belmont (she/her/hers)

Professor at California State University

Her expertise is analysis of and consulting about Volatile Organic Compounds used in consumer products and coatings/adhesives.

She got involved with a local organization of gay and lesbian scientists in Los Angeles in the early 1980s. Many of the volunteers in that group were those spearheading the push for a national organization—what was to become Out to Innovate. The group has partnered with the American Association for the Advancement of Science early on, using the association's national meetings to highlight issues critical to LGBTQ+ scientists.

The group has presented symposia on AIDS research, transgender studies, health-care disparities for LGBTQ+ people, and diversity and inclusion, among many other topics. Dr. Belmont has been recently recognized as an LGBTQ+ Trailblazer.

<https://cen.acs.org/analytical-chemistry/Barbara-Belmont-is-devoted-to-nurturing-the-next-generation-of-scientists/100/i12>

<https://thereader.500queerscientists.com/out-to-innovate-formerly-noglstp-with-barbara-belmont/>

